

Advertisement



Filtek™ Supreme Ultra
Ultra Universal Restorative

Loved by dentists.
Hated by tooth fairies.

Click here

3M ESPE

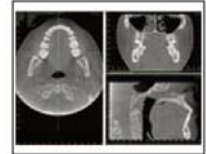
Review of Imaging Sciences' i-CAT Cone Beam 3-D Imaging

- By [Steven A. Guttenberg, DDS, MD](#)

[E-mail to a friend](#) [Comment](#) [View all Comments](#) [Reviews](#)

» [Vendor Product Listing](#)

By now, most dental practitioners have heard the buzz about cone beam imaging. At [The Washington Institute for Mouth, Face and Jaw Surgery](#), we have not only heard about the benefits, but have witnessed, first hand, the improvements that this technology has brought to our practice. To thrive, an implant practice must offer all of the latest procedures available, plus, imaging options that ensure the success of their treatment plans. For any dental specialty, imaging accuracy and predictability are priceless.



In 2002, after investigating the available options, my practice chose the [i-CAT®](#). It was immediately apparent that the investment in this technology would make it easier to plan our implant cases. Cone beam imaging provides a view of the mouth that reduces surprises; we are privy to the exact location of anatomical structures that we can slice in every direction, all without distortion. This unique view, that only 3-D offers, allows precision planning before initiating any surgical procedures.

3-D enhances communication and treatment acceptance. Patients feel empowered by their own involvement in the treatment, and, with the 3-D images in front of them, they are confident in our diagnoses. Patient satisfaction is heightened even further when they don't have to schedule an appointment and travel to another imaging center; and they are relieved that your machine exposes them to less radiation and cost than traditional scans. The result is increased case acceptance, and referrals to friends. The increased revenue from patients and referrals covered the cost of our investment within the first nine months.

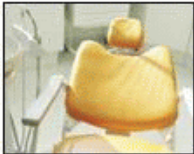
Even without financial rewards, 3-D imaging has benefited the practice by improving the quality of care. However, there's nothing wrong with some financial benefits. With the average cost of a scan at \$350, the annual revenue to a practice that typically takes 40 scans a month can reach \$168,000. A wide variety of finance options and tax incentives lets this technology help improve your clinical abilities and helps grow your business, now.

In our present economy, any competitive edge is advantageous. Clinically, 3-D gives us a clear, virtual, rotating model of the dentition that is compatible with implant applications such as [SimPlant](#), [NobelGuide](#), and EasyGuide™. As you consult with patients, these images speak for themselves. Referrals increase as word gets around that your technology investment improved their treatment, making it safer and easier for them. Updating your imaging to 3-D improves your professional image and that's profitable in any dimension.

» **i-CAT - Imaging Sciences International**

The technology and design of the i-CAT® puts advanced in-office imaging

Dental Office Setup




Dental Office Setup?
Moving to a new location? Looking for equipment financing?

Learning Centers

- CAD / CAM Dentistry
- Digital Imaging
- Endodontics
- Esthetic Dentistry
- Implant Dentistry
- Laser Dentistry
- Operatory Equipment & Design
- Periodontics
- Restorative

New Dental Products



inEos Blue Desktop Model Scanner from

Sirona Dental Systems

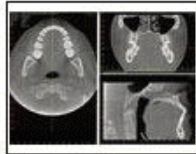
More New Products...

Dental Newsletters



Keep up with the latest products and techniques in dentistry. Plus, get special offers and more delivered to your email box.

Sign Up Now



within the realm of an expanding universe of practices, those that want to place themselves at the center of patient care by providing a full continuum of services from diagnosis to treatment. The i-CAT's Cone Beam 3-D Dental Imaging System provides high-definition, digital imaging at reduced cost with less radiation to the patient and typical scan times of 5, 8.9 or 26.9 seconds. The i-CAT's computer controlled software delivers quick & easy reconstruction of critical anatomical information typically in less than 30 seconds.

Request Information

Review Synopsis

Product:

Review of Imaging Sciences' i-CAT Cone Beam 3-D Imaging

The Good:

Enhanced communication and treatment acceptance.

The Bad:

Increased referrals--more patients!

The Bottom Line:

Better care and better bottom line.

User comments:

[Comment on this article](#)

More Articles:

[Dental Product Review Archives](#)

[Article Archives](#)

advertisement



[Restorative Dentistry](#) | [Endodontics](#) | [Oral Surgery](#) | [Orthodontics](#) | [Services](#)
[Professional Dental Laboratory](#) | [Periodontics](#) | [Dental Practice Setup](#) | [Digital Imaging](#)

[Dental Products](#) | [New Products](#) | [Featured Products](#) | [Articles](#) | [Reviews](#) | [Videos](#) | [Promos](#) | [News](#)
[Journal Updates](#) | [Resources](#) | [Events](#) | [Lab Finder](#)

VISIT OUR SISTER SITES:

Searching for medical products? Visit [Medcompare.com](#) | Searching for lab products? Visit [Biocompare.com](#)

Are you an ophthalmologist? Visit [OphthalmologyWeb.com](#) | Need CME/CE Credits? Visit [AcuityMedEd.com](#)

Searching for laboratory equipment? Visit [Labcompare.com](#) | Searching for food technology equipment? Visit [Foodtechcompare.com](#)